 säilytettävää puustoa
(viitteellinen)

KERROSALA 10200 kem2

Lisäkerrosalat:
- varastot, tekniset tilat, yhteistilat
- us 250 mm ylittävä paksuus
- porrashuoneiden 20 m2 ylittävä ala

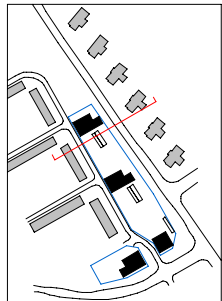
AUTOPAIKAT
1 ap / 95 kem2 => 108 ap

70 avopaikkaa
38 ap katoksessa
108 ap yhteensä

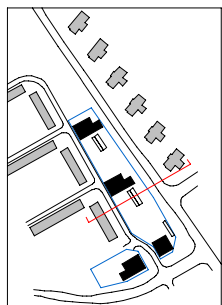
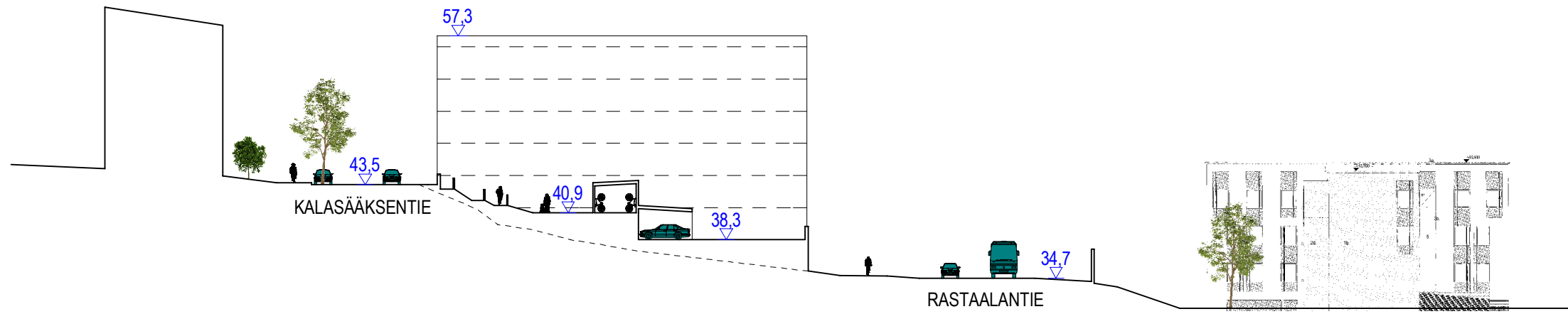
POLKUPYÖRÄPAIKAT
1 pp / 30 kem2 => 340 pp

- autopaikoilla nurmikivi
- varastot ja autokatokset
viherkattoisia

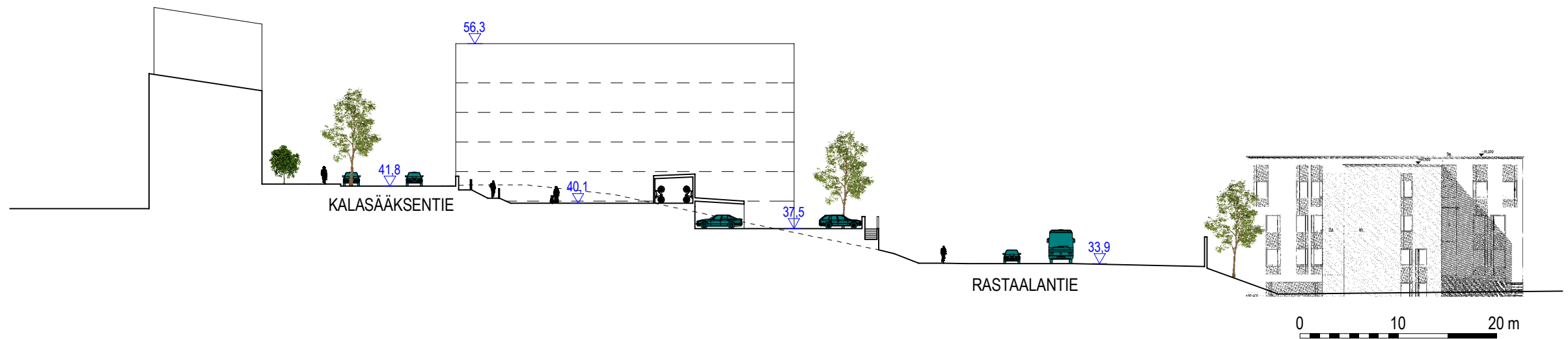


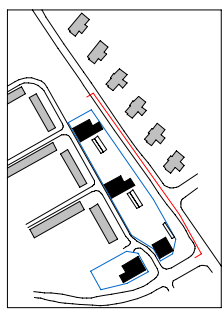
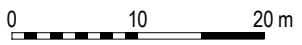
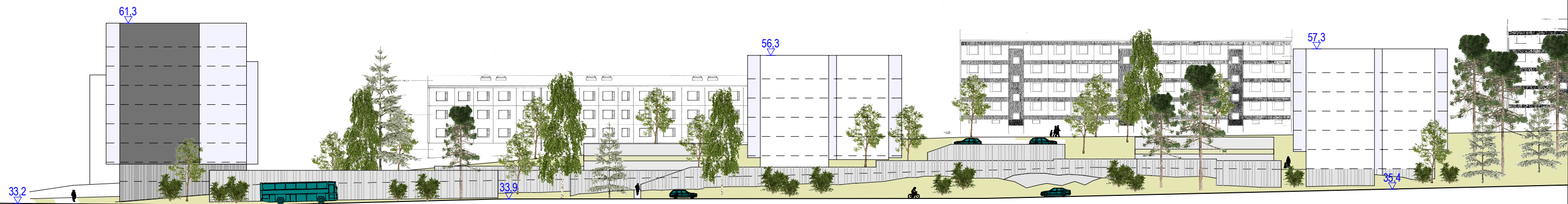


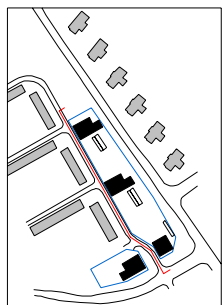
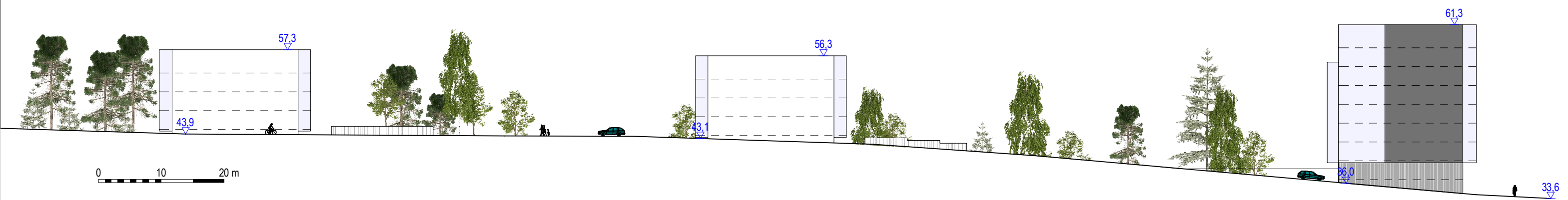
ALUELEIKKAUS A-A 1:500

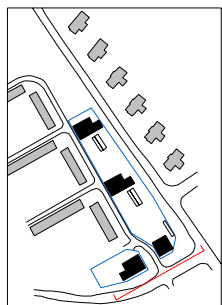
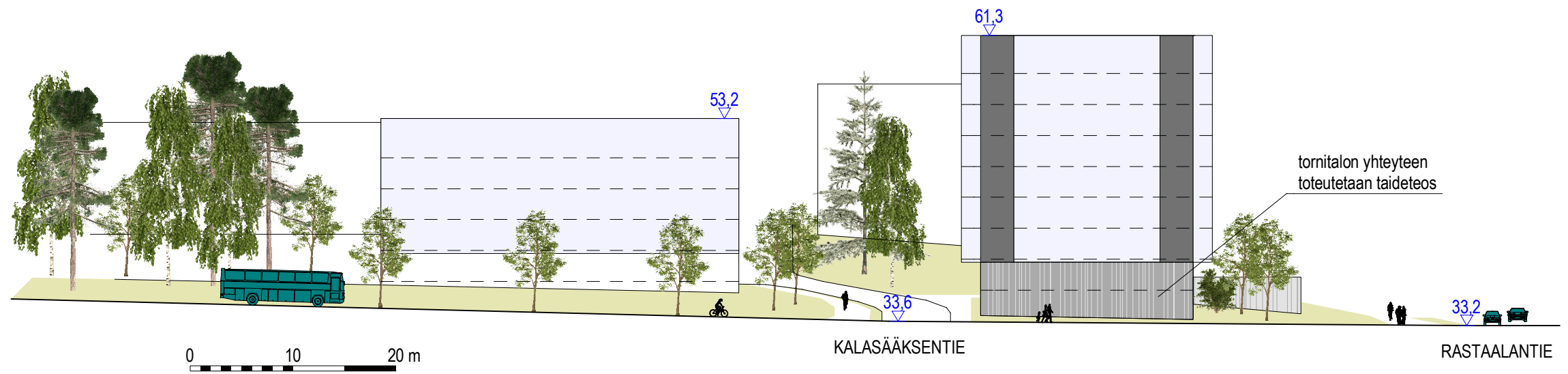


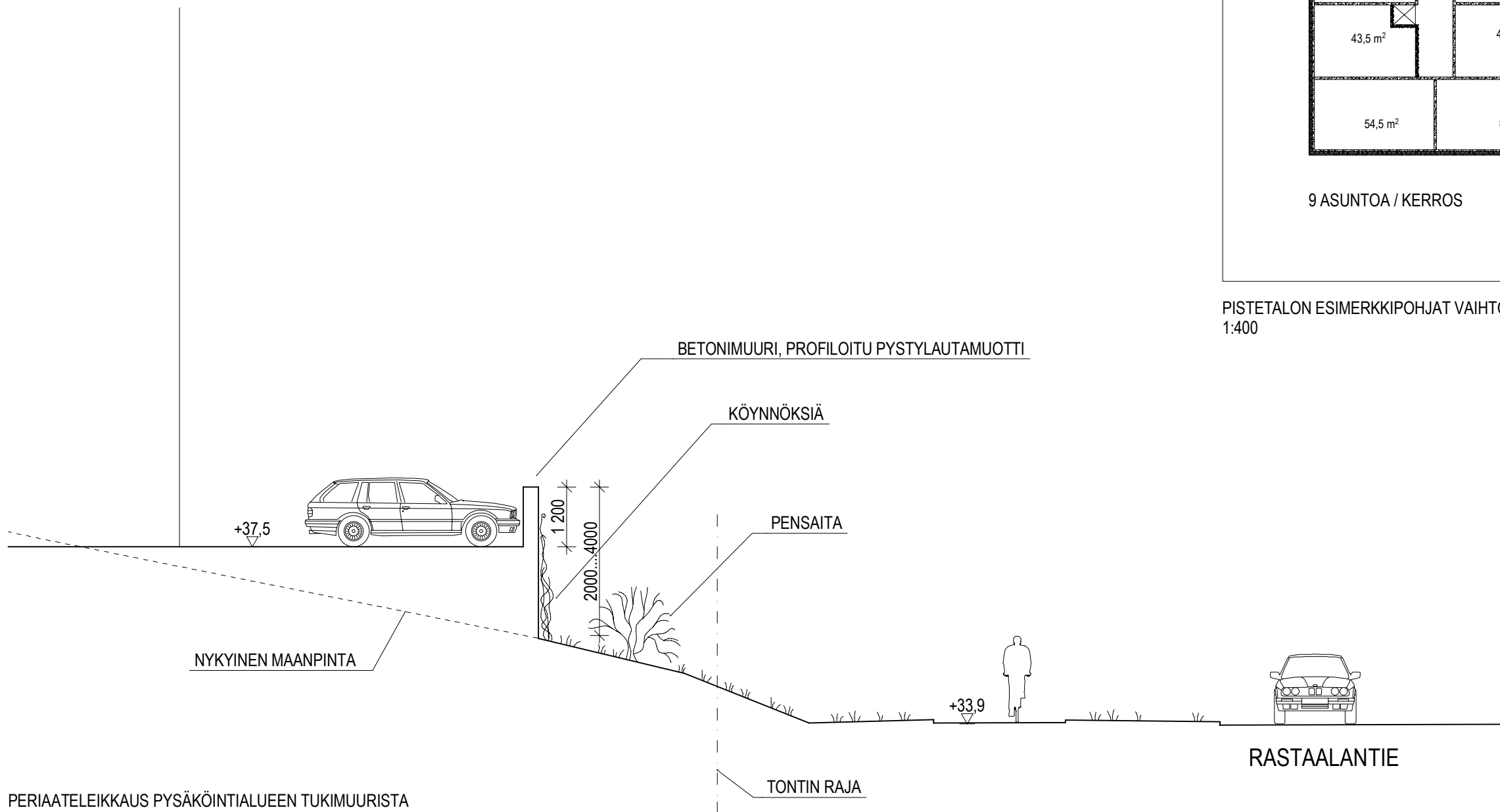
ALUELEIKKAUS B-B 1:500



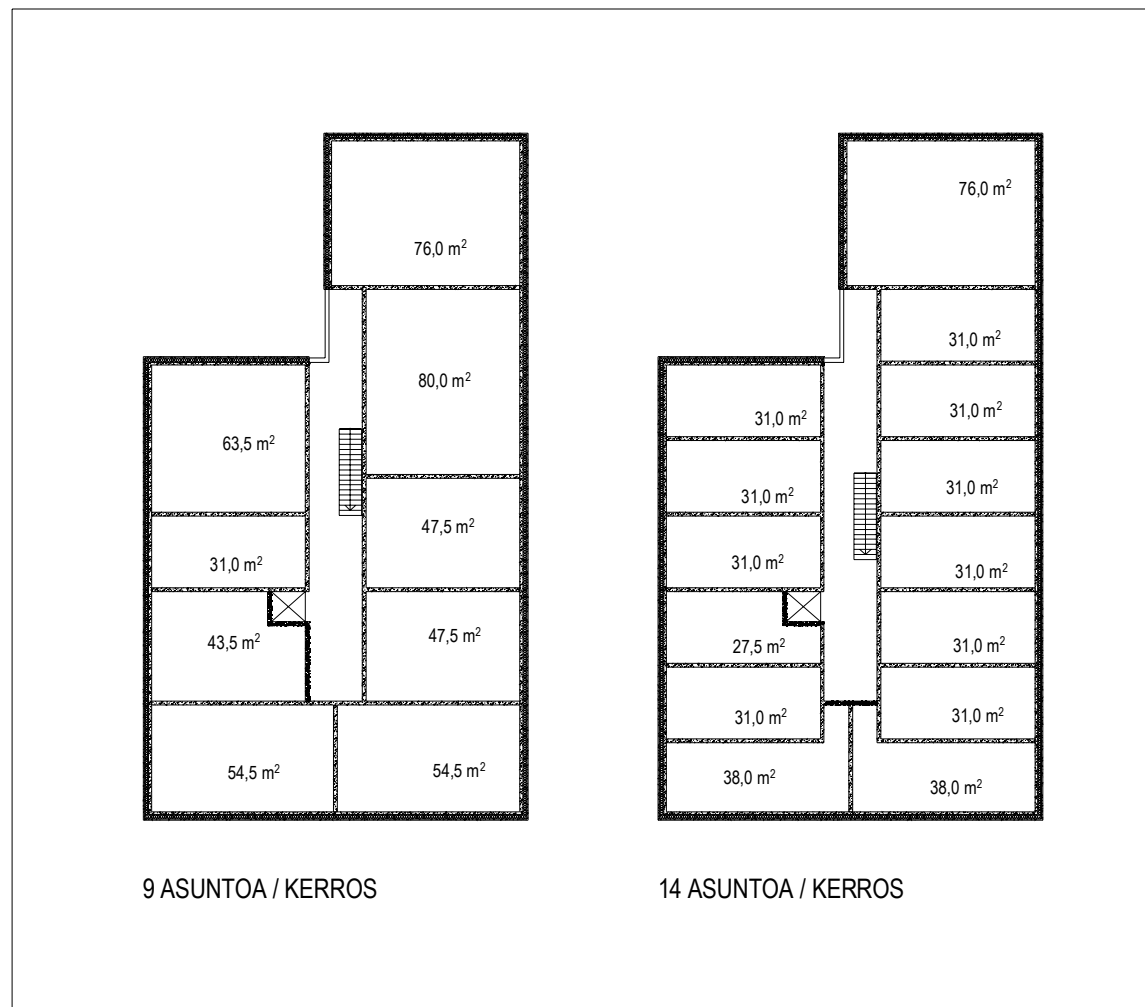








PERIAATELEIKKAUS PYSÄKÖINTIALUEEN TUKIMUURISTA
1:100



PISTETALON ESIMERKKIPOHJAT VAIHTOEHTOISILLA ASUNTOJAKAUMILLA
1:400





